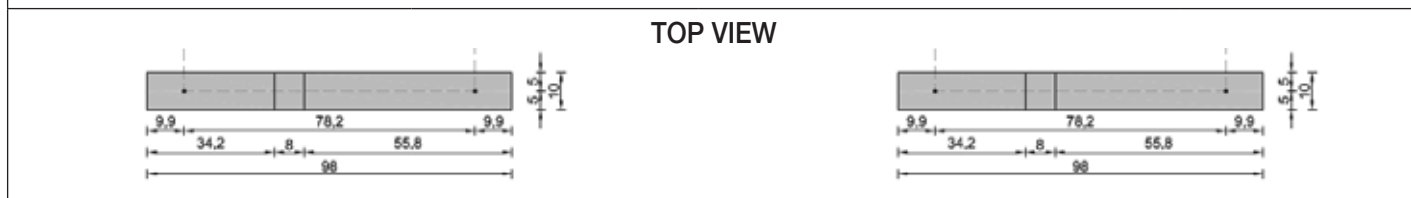
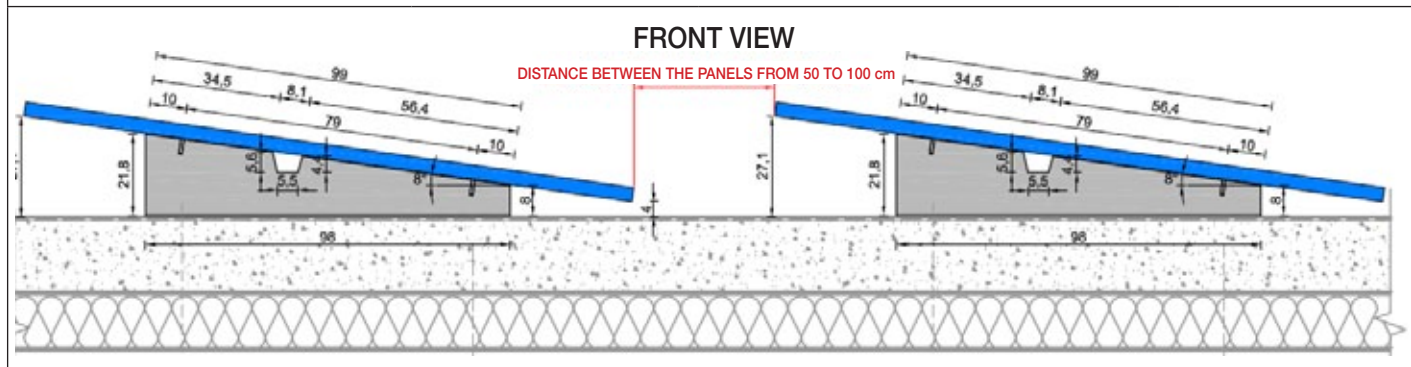


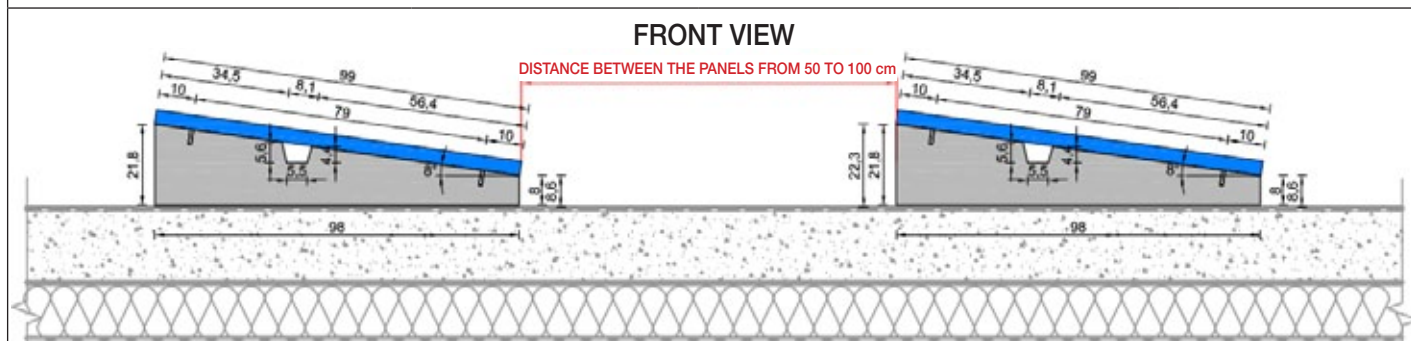
BALLAST WITH 8° ANGLE - Item 23008

DESCRIPTION	Sun Ballast is mainly made of concrete, which ensures low wear over time and high resistance against the harshest weather conditions.		
APPLICATION	Any type of flat or low-pitched roof with up to 10° slope, on the ground, on compacted grounds with inert materials or flooring.		
MODULE TILT ANGLE	8°	NUMBER PER PALLET	24
BALLAST WEIGHT	34 kg	PALLET DIMENSIONS	58 cm x 98 cm h= 77 cm
DISTANCE BETWEEN PANELS	From 50 cm to 100 cm	OVERALL PALLET WEIGHT	816 kg
PV MODULE ORIENTATION	Horizontal, Vertical	PV PANEL DIMENSIONS AS PER DRAWING	165 cm x 99,2 cm

BALLAST DIMENSIONS AND PANEL HEIGHT FROM THE GROUND - UNIT OF MEASUREMENT cm VERTICAL PANEL INSTALLATION



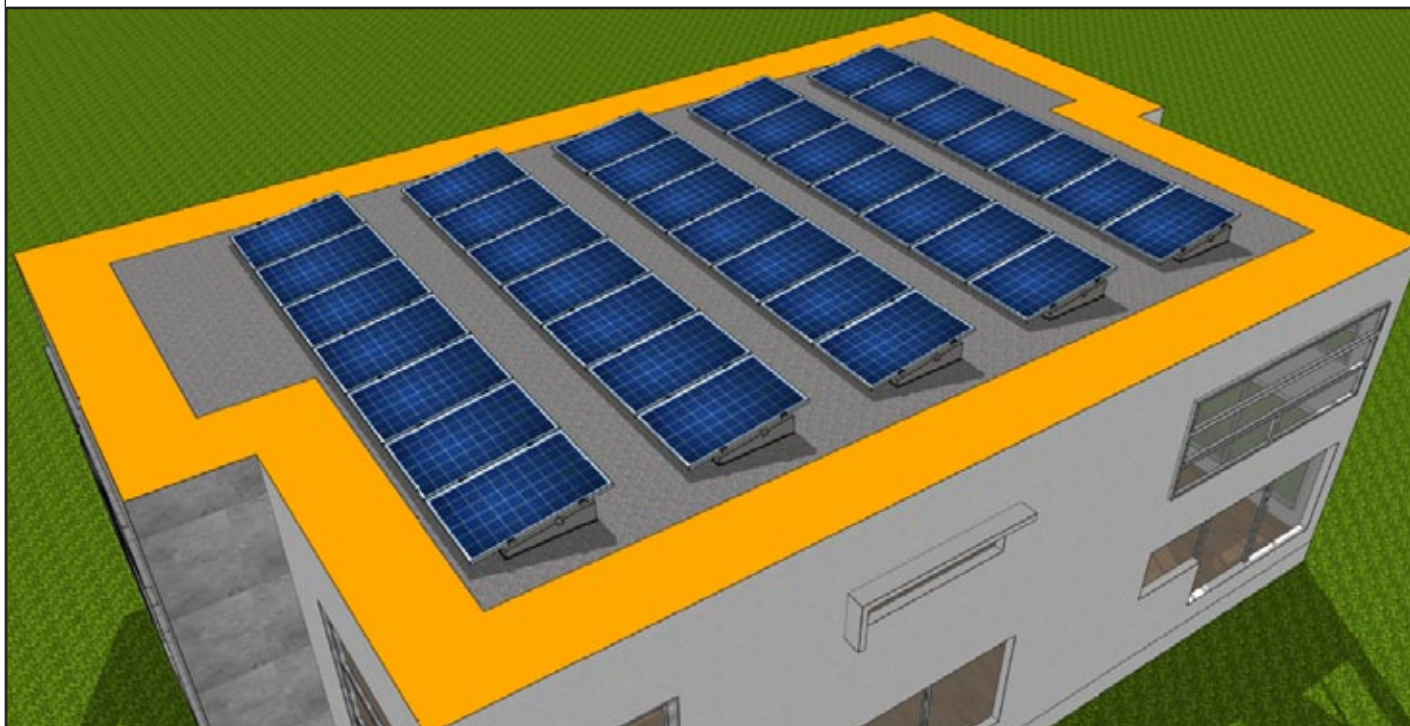
BALLAST DIMENSIONS AND PANEL HEIGHT FROM THE GROUND - UNIT OF MEASUREMENT cm HORIZONTAL PANEL INSTALLATION



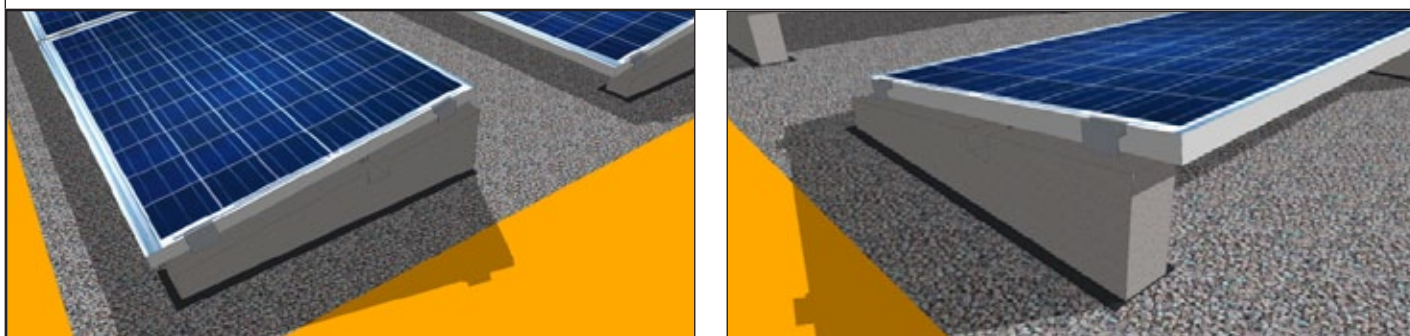
GENERAL NOTES	For information, please visit www.sunballast.it
----------------------	--



PANEL INSTALLATION ON FLAT ROOFS



BALLAST VIEW ON FLAT ROOF



8° BALLAST
Item 23008